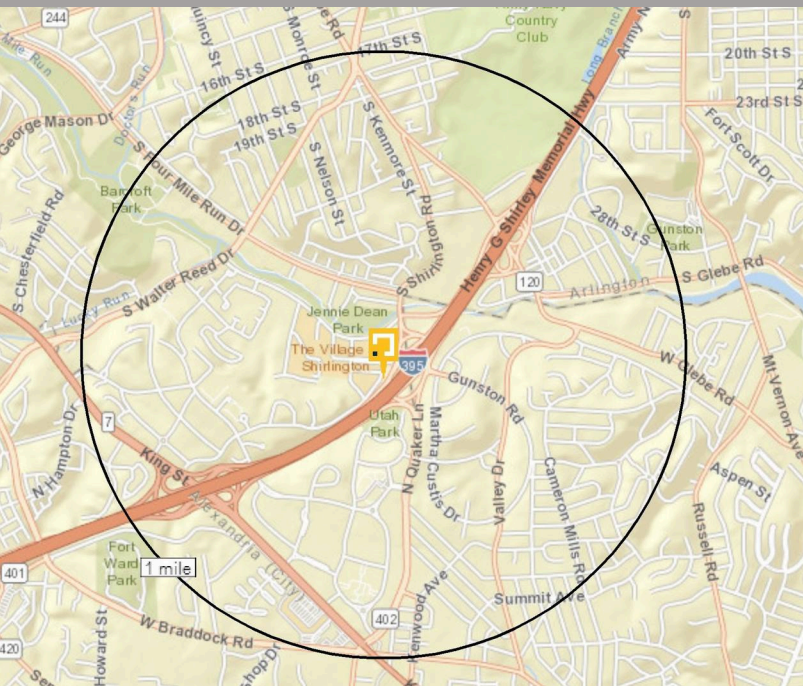


VILLAGE AT SHIRLINGTON

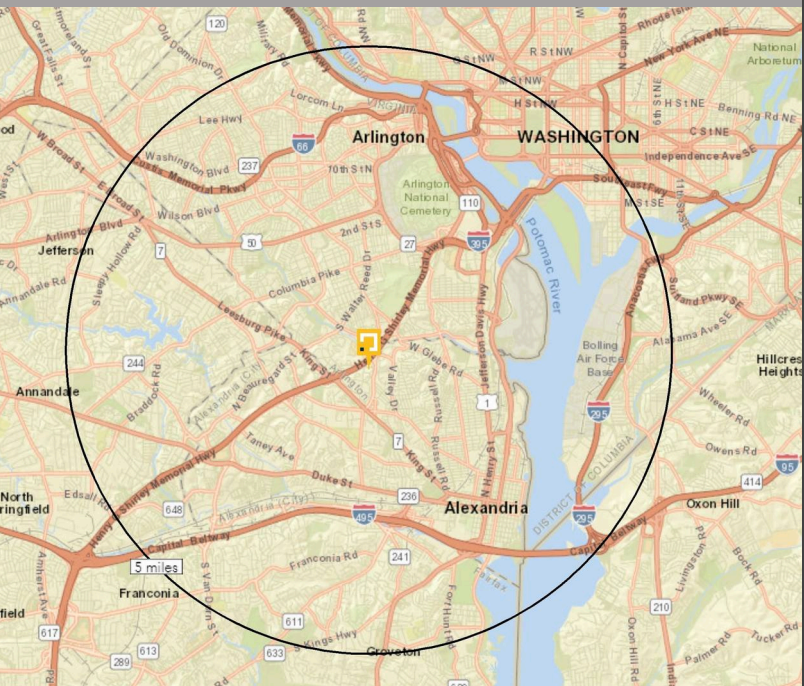
Arlington, VA



1 MILE RADIUS



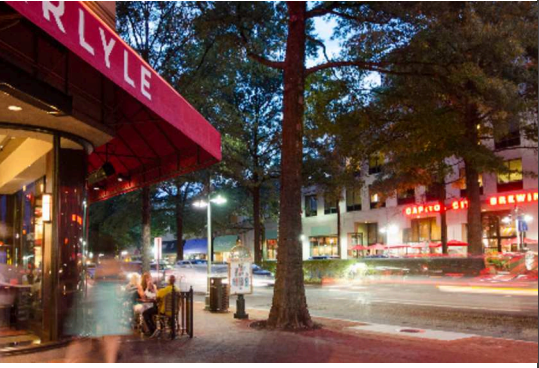
5 MILE RADIUS



The Village at Shirlington is located in Arlington County, at the intersection of Campbell Avenue and South Quincy Street in Arlington, VA. This mixed-use property has a total of 266,000 square feet and 1,184 parking spaces. The population in a 3-mile radius is approximately 261,000 with an average household income of \$121,000. The Village at Shirlington offers a wide variety of dining options including Carlyle, Copperwood Tavern and Guapo's; as well as entertainment that includes the Signature Theatre and AMC Theatres; and a wide range of services such as drycleaning, spas, banking, fitness & more!

VILLAGE AT SHIRLINGTON

2700 South Quincy Street
Arlington, VA 22206



Walk Score
84

Transit Score
56

Bike Score
77

GLA
260,000 SF

ACREAGE
16

COUNTY
Arlington

TYPE
Urban Mixed Use

PARKING SPACES
1,184

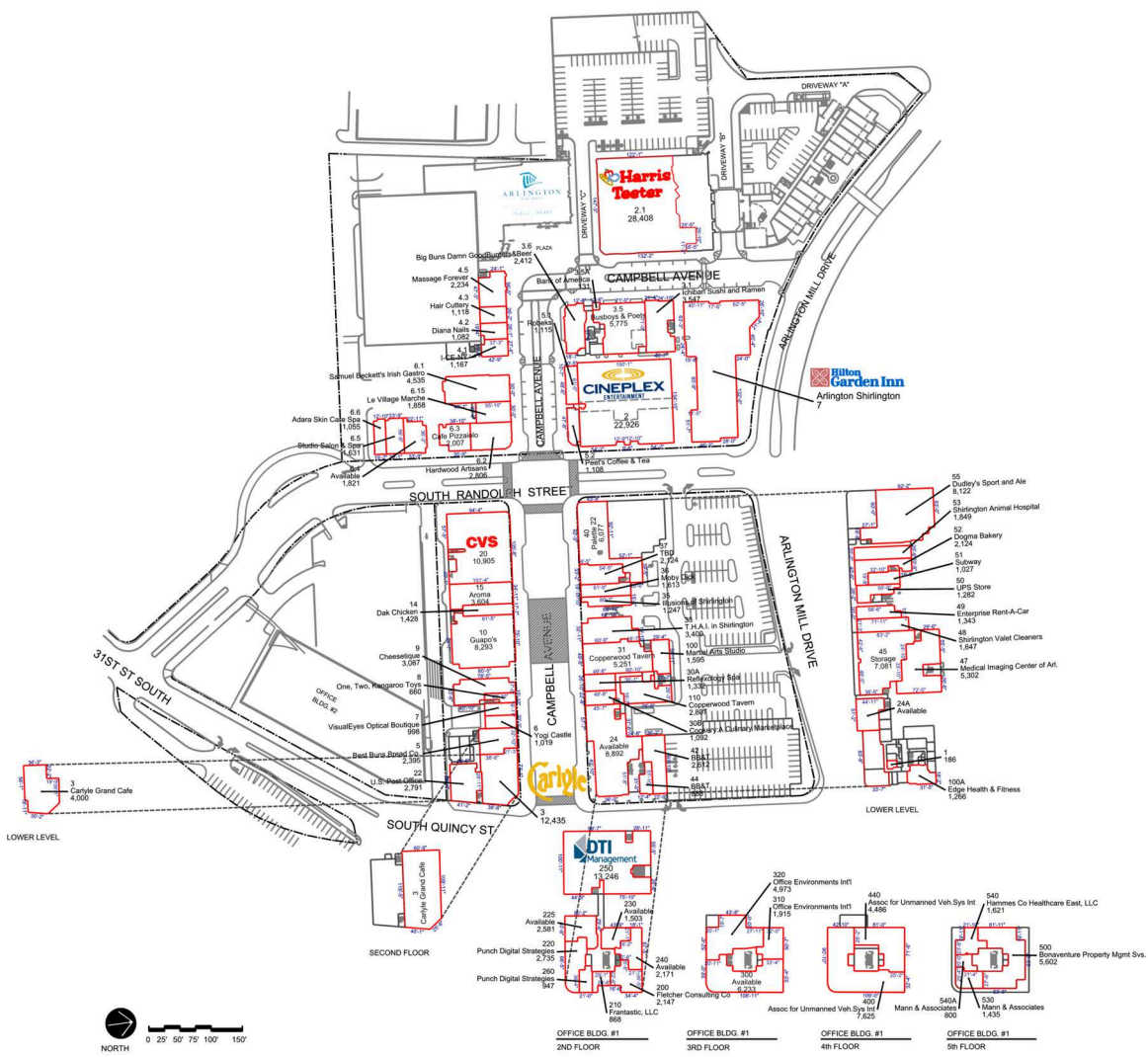
DEMOGRAPHICS

| | POPULATION | DAYTIME POPULATION | HOUSEHOLDS | MEDIAN HHI | AVERAGE HHI | MEDIAN AGE | COLLEGE EDUCATED |
|--------|------------|--------------------|------------|------------|-------------|------------|------------------|
| 1 MILE | 35,728 | 24,217 | 18,015 | \$110,025 | \$143,223 | 37 | 72% |
| 3 MILE | 266,217 | 251,929 | 124,599 | \$102,770 | \$137,277 | 37 | 65% |
| 5 MILE | 582,323 | 917,390 | 263,484 | \$102,883 | \$141,079 | 36 | 66% |

LEASING CONTACT:
Ralph Ours
rours@federalrealty.com
(301) 998-8154

VILLAGE AT SHIRLINGTON

Arlington, VA



LEASING CONTACT:

Ralph Ours | rou@federalrealty.com | (301) 998-8154

www.federalrealty.com/villageatshirlington

The parties acknowledge that this Plan is for identification purposes only and does not constitute any covenant, representations, or warranty by Landlord that any existing or future conditions shown exists, or that, if they do exist, will continue to exist through out all or any part of the lease term, except to the extent such covenant, representation or warranty is expressly set forth in the Lease.