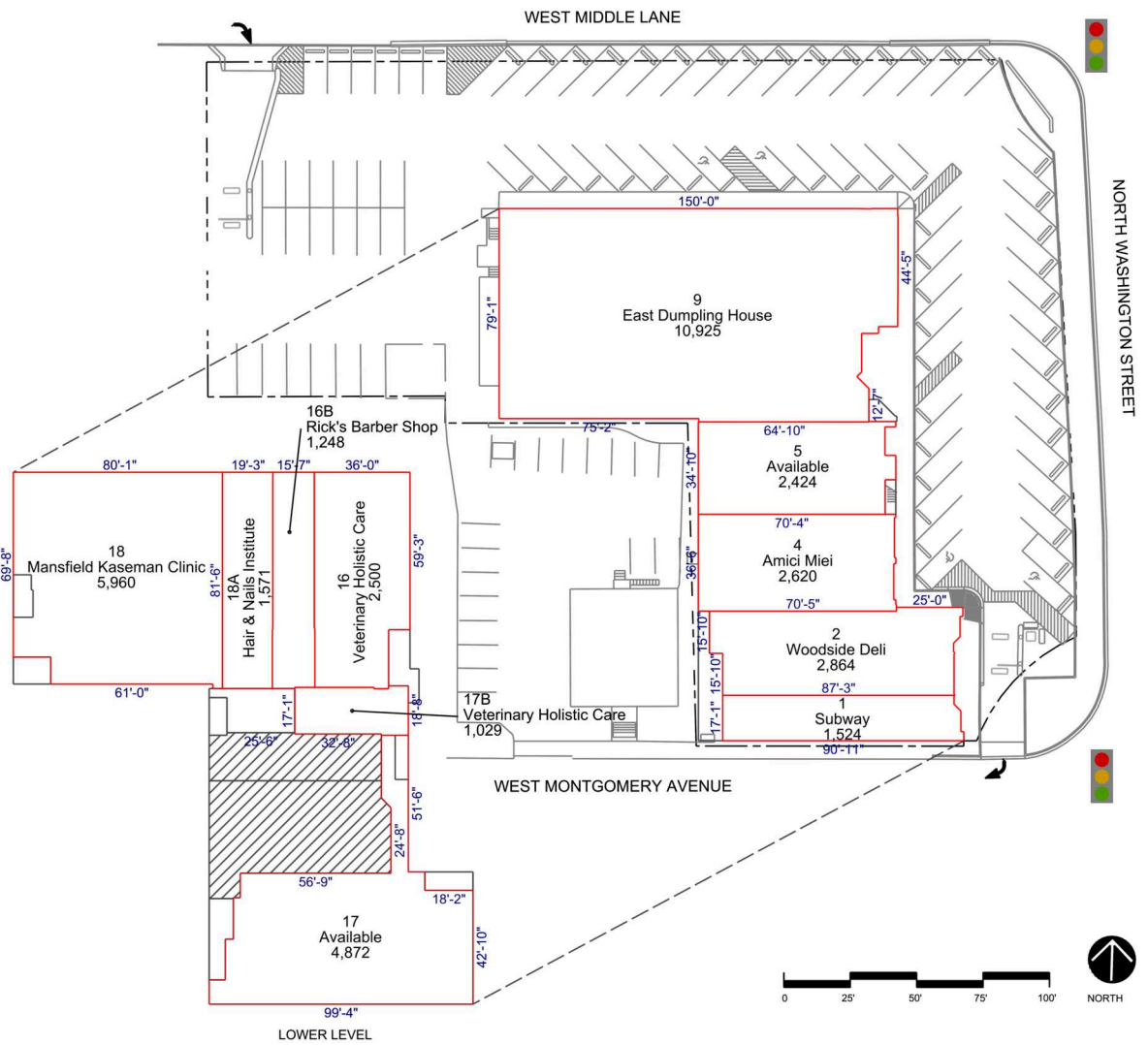


# COURTHOUSE CENTER

Rockville, MD



## LEASING CONTACT:

Jenn Davidson | [jdavidson@federalrealty.com](mailto:jdavidson@federalrealty.com) | (301) 529-0004

[www.federalrealty.com/courthouse](http://www.federalrealty.com/courthouse)

The parties acknowledge that this Plan is for identification purposes only and does not constitute any covenant, representations, or warranty by Landlord that any existing or future conditions shown exists, or that, if they do exist, will continue to exist through out all or any part of the lease term, except to the extent such covenant, representation or warranty is expressly set forth in the Lease.